



**HEXAGON**  
GEOSPATIAL

Training Partner

Professional Training in  
Remote Sensing & Satellites Image Processing



# Arab Academy

For Science, Technology &  
Maritime Transport

## Students Success Stories

2018  
2019



[www.remote-sensing-portal.com](http://www.remote-sensing-portal.com)  
[info@remote-sensing-portal.com](mailto:info@remote-sensing-portal.com)  
Creative City, Creative Tower, Fujairah, UAE.

# The Curriculum of Professional Training in Remote Sensing and Satellite Image processing (Part 1)



## Remote Sensing Specialist.. RSS™

Includes nine remote sensing and satellite image processing short courses

The first two short courses are introductory courses with no practical work. The following seven short courses are all practical courses. They are applied on real satellite images and a professional remote sensing software (ERDAS IMAGINE®). The sequence of the courses is ordered in a certain way that delivers Remote Sensing education simply and gradually, starting from the beginners level and progressing gradually until reaching the specialists level.

In the specialist level, you will be able to produce a professional map with all its components such as a grid, scale bar, color key, north arrow, and others. Your map can represent any type of information such as agriculture, soil, environment, or just the name of the roads network and cities. In order to reach this level you will gradually learn how to deal with satellite image processing steps through learning the following:

[How to decide the needs of your project and which satellite images are more suitable - How to purchase the needed satellite images and test their quality – How to perform Geometric Correction - How to make a professional visual interpretation for the satellite image features - How to make digitizing and annotation for these features - How to perform analysis for pixels' values – How to classify a satellite image into groups with similar data types (Agriculture, soil, water, urban areas, ...) – How to gather all available information in a clear and professional map].

Reaching the Remote Sensing Specialist level and having the RSS™ certificate qualify you to progress to the next level which is the Remote Sensing Professional (RSP™). In the RSP™ level you will be able to perform more professional satellite image processing operations, such as [Mosaicing, Enhancement, Terrain Analysis, 3D simulation, and 3D analysis].

You can take the nine RSS™ courses -or some of them- for training purposes only without attending their online exams. But in order to get the RSS™ certificate, you should pass the nine exams related to the short courses no 1 to 9 -shown below. Additionally, you should perform all practical assignments related to courses no 3 to 9.

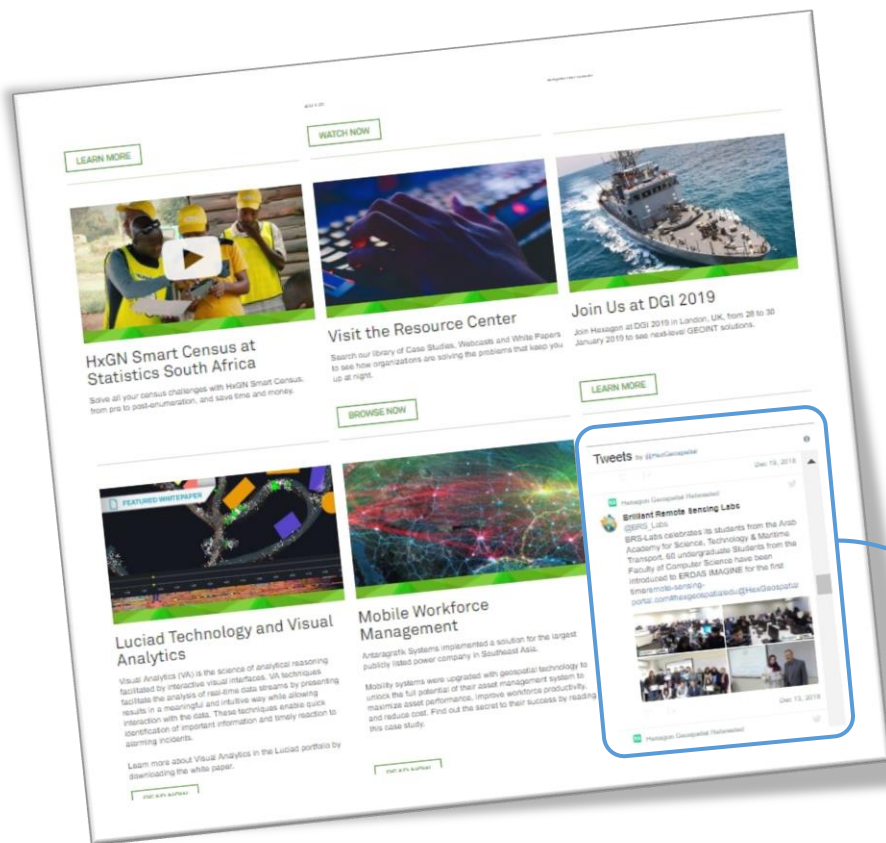
RSS™

1. Space Science and Satellites Overview for General Managers & Supervisors.
2. Remote Sensing Fundamentals.
3. Introduction to Practical Remote Sensing (Using ERDAS IMAGINE®).
4. Satellite Images Geometric Correction and Map projection.
5. Satellite Images Visual Interpretation.
6. Satellite Images Digitizing and Annotation.
7. Satellite Images Classification Essential.
8. Satellite Images Classification Advanced + Image Differencing.
9. Map Production From Satellite Images.

01

**The Students of the Arab Academy  
(AASTMT)  
On the Homepage of  
Hexagon Geospatial's Website.**





[www.hexagongeospatial.com](http://www.hexagongeospatial.com)

Hexagon Geospatial Retweeted

 **Brilliant Remote Sensing Labs** @BRS\_Labs · 13 Dec 2018

BRS-Labs celebrates its students from the Arab Academy for Science, Technology & Maritime Transport. 60 undergraduate Students from the Faculty of Computer Science have been introduced to ERDAS IMAGINE for the first time

[remote-sensing-portal.com](http://remote-sensing-portal.com)

#hexgeospatialedu

@HexGeospatial



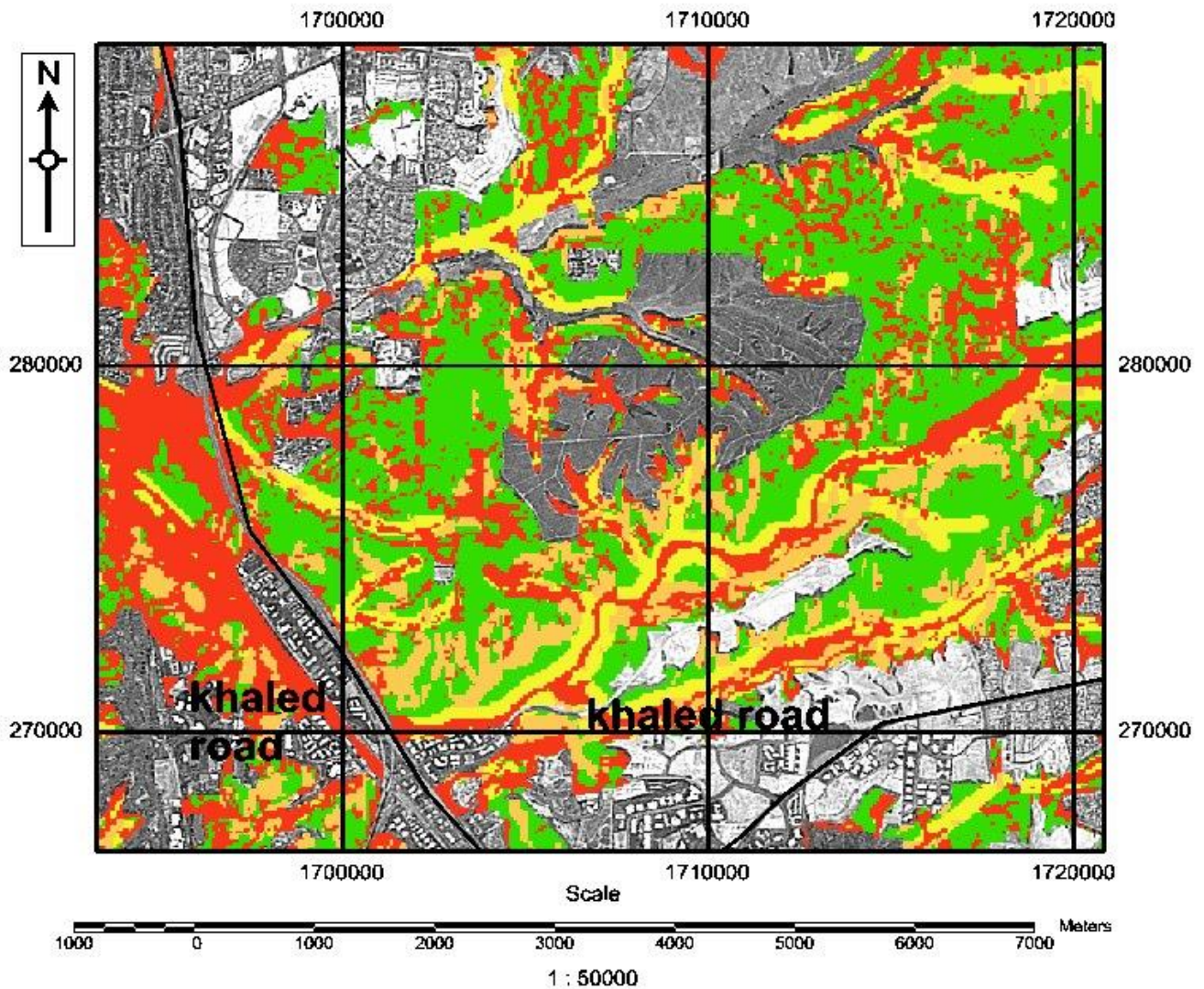
1 3 9

# **Samples from the Students Final Projects in Map Production Using ERDAS IMAGINE®**







# Environment Analysis Map

## Using ERDAS IMAGINE



### Legend

#### Class\_Names

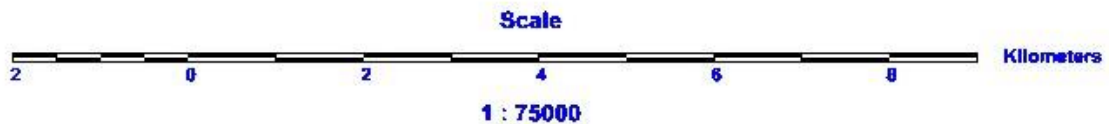
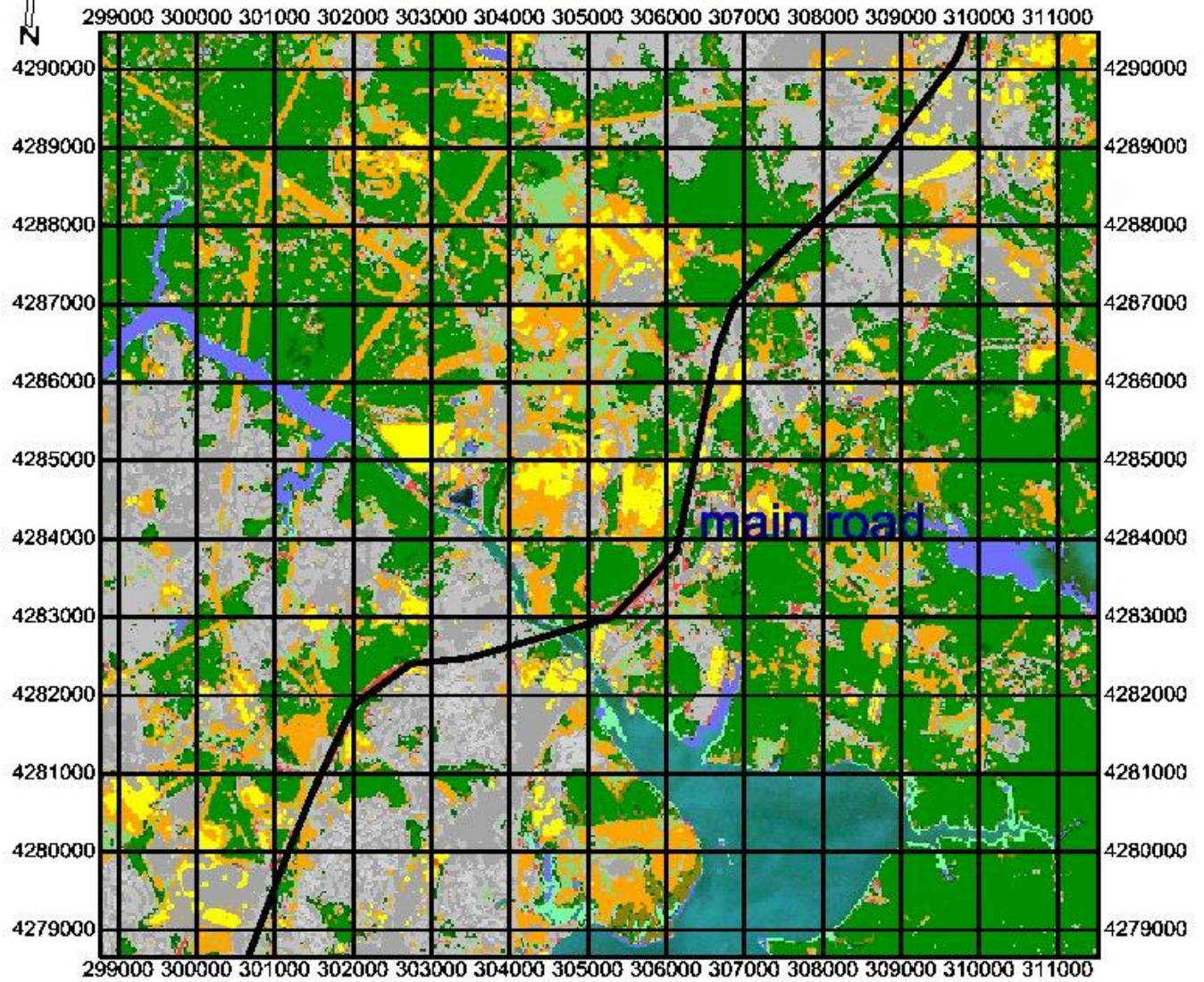
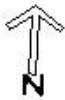
-  Undeveloped Land
-  Floodplain
-  > 25 Percent Slope
-  Riparian and Wetlands



**Arab Academy for  
Science, Technology and Maritime Transport**



# Forest Analysis Map Using ERDAS IMAGINE



## Legend

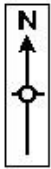
### Class\_Names

- Tidal Water
- River Water
- Grassland
- Forest
- Bare Ground
- Grass / Scrub
- Road / Suburban



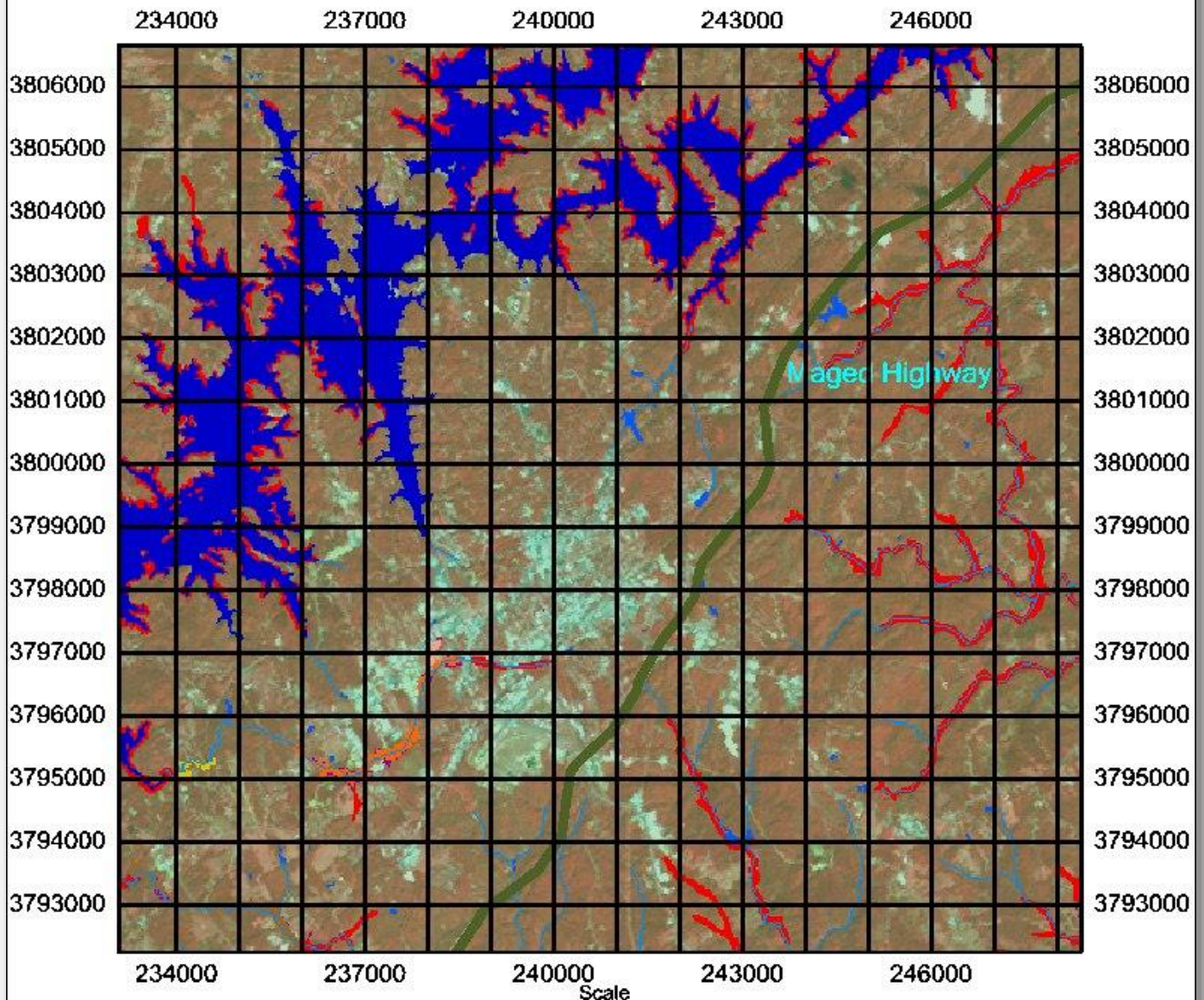
**Arab Academy for  
Science, Technology and Maritime Transport**





# Hydrological Analysis Map

## Using ERDAS IMAGINE



Scale  
1 : 90000

### Legend

Class\_Names

- Bg
- Lake Lanier
- Other lakes
- Streams
- Zone A
- Zone A2
- Zone A3
- Zone A4
- Zone A5
- Zone A8

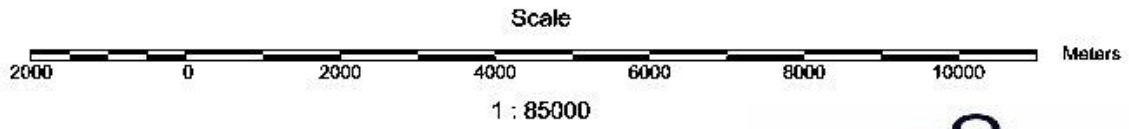
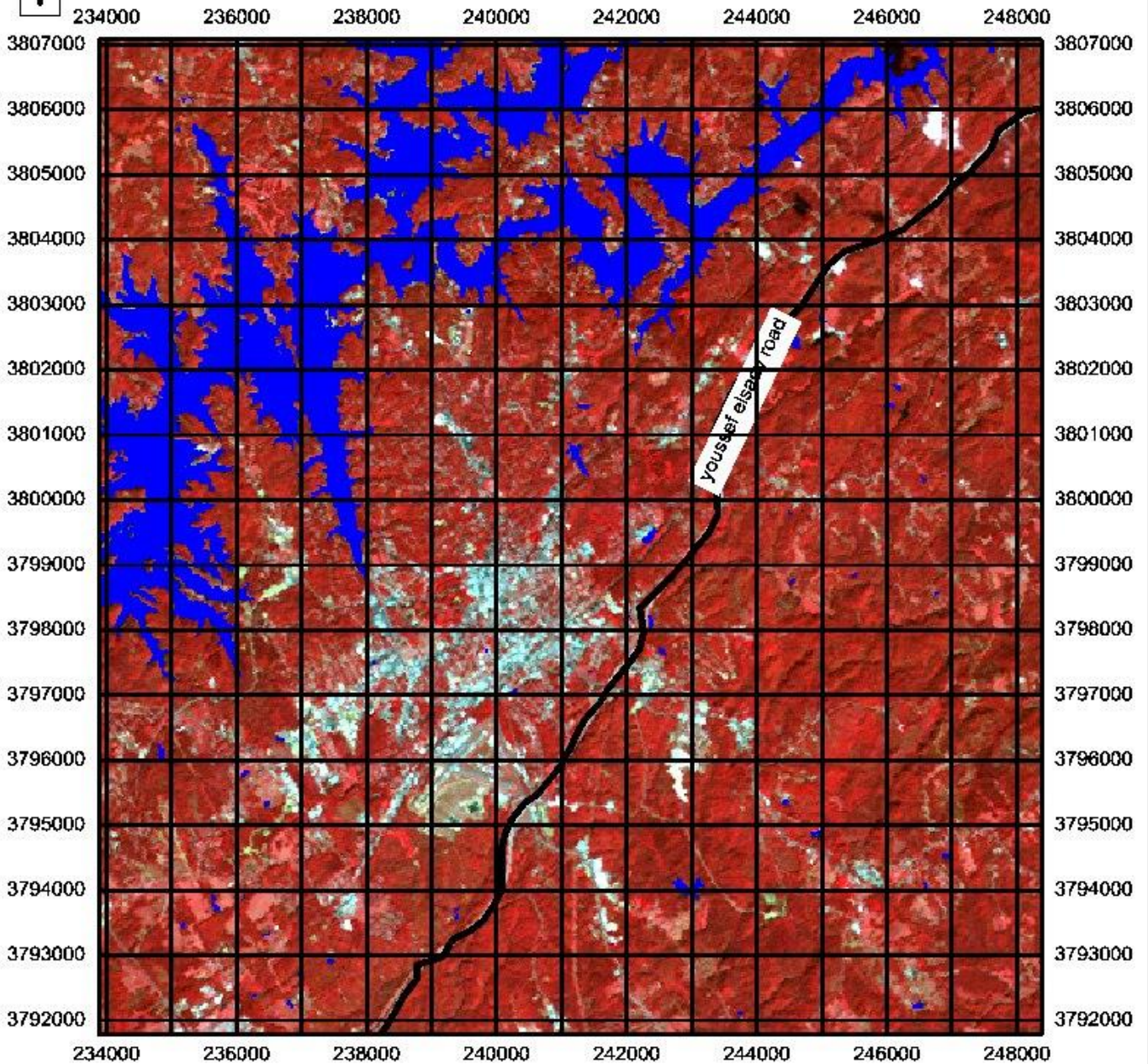


Arab Academy for  
Science, Technology and Maritime Transport





# Lakes and Ponds Analysis Map using ERDAS IMAGINE



## Legend

Class\_Names



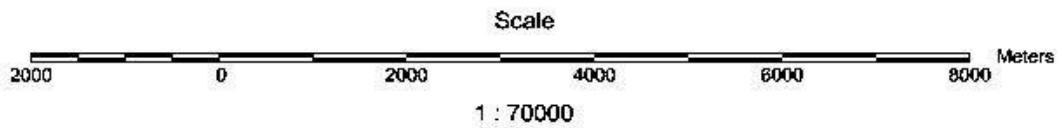
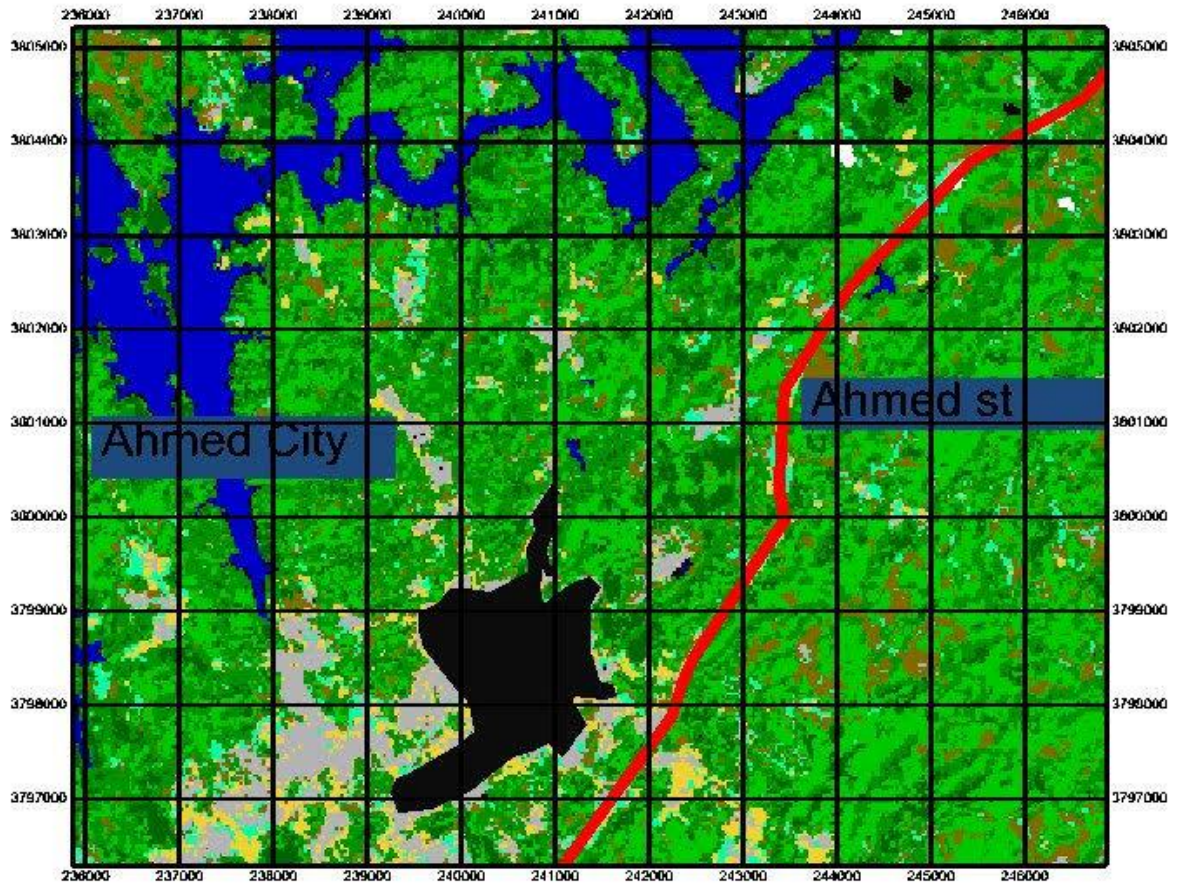
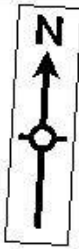
Lakes and Ponds



Arab Academy for  
Science, Technology and Maritime Transport



# Land Analysis Map Using Erdas Imagine



Legend

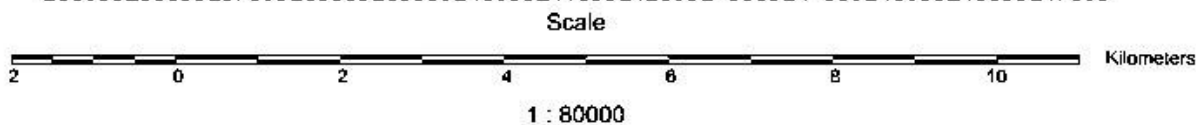
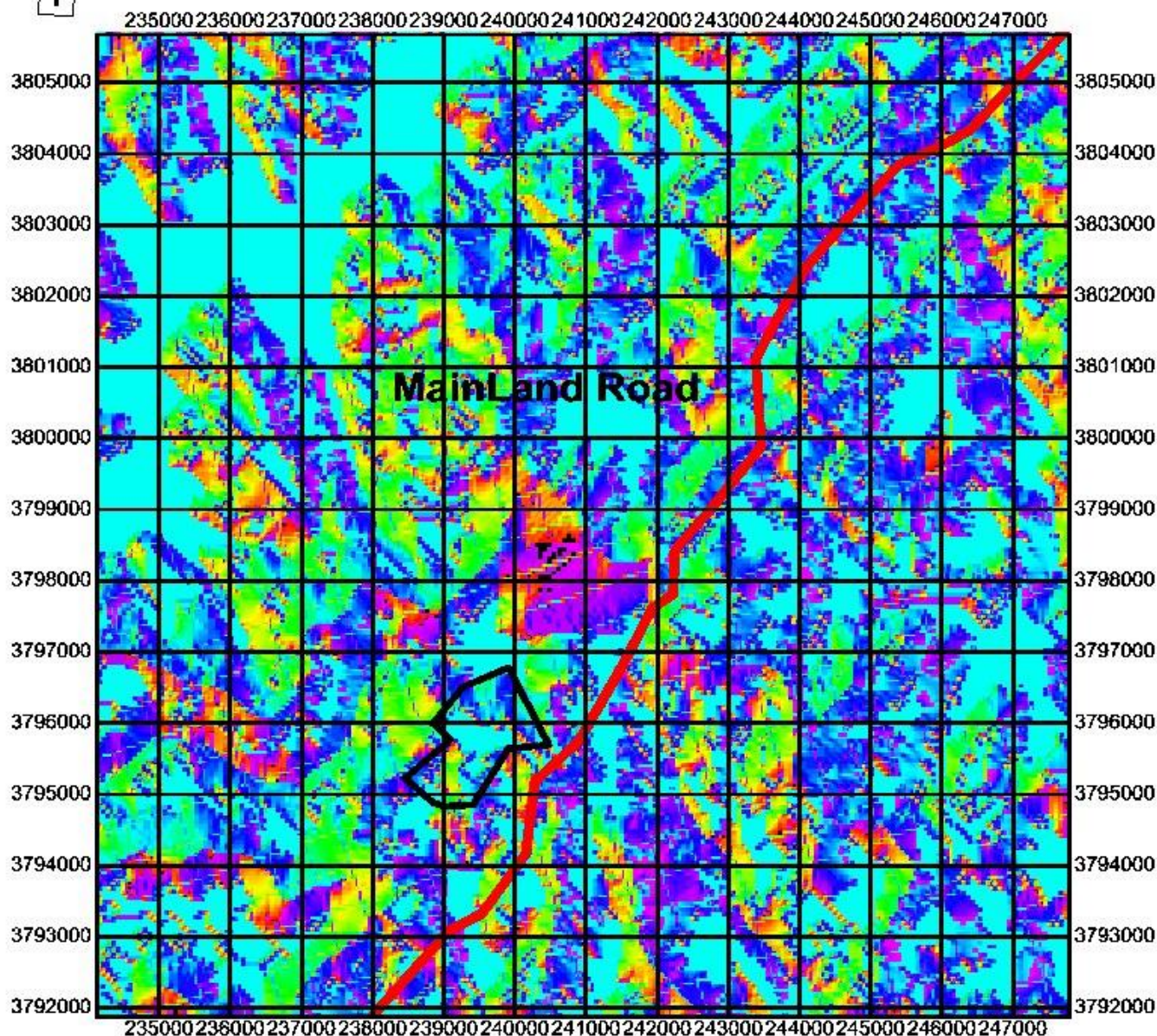
Class_Names	
BG	
	DECIDUOUS
	DECIDUOUS/PINE MIXED
	PINE
	WATER
	AGRICULTURE
	BARE GROUND
	GRASS
	URBAN/DEVELOPED



**Arab Academy for  
Science, Technology and Maritime Transport**



# Aspect Analysis Map using ERDAS IMAGINE 2018



## Legend

### Class\_Names

#### Background

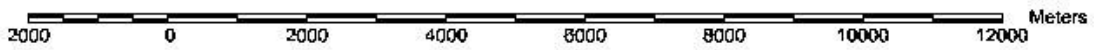
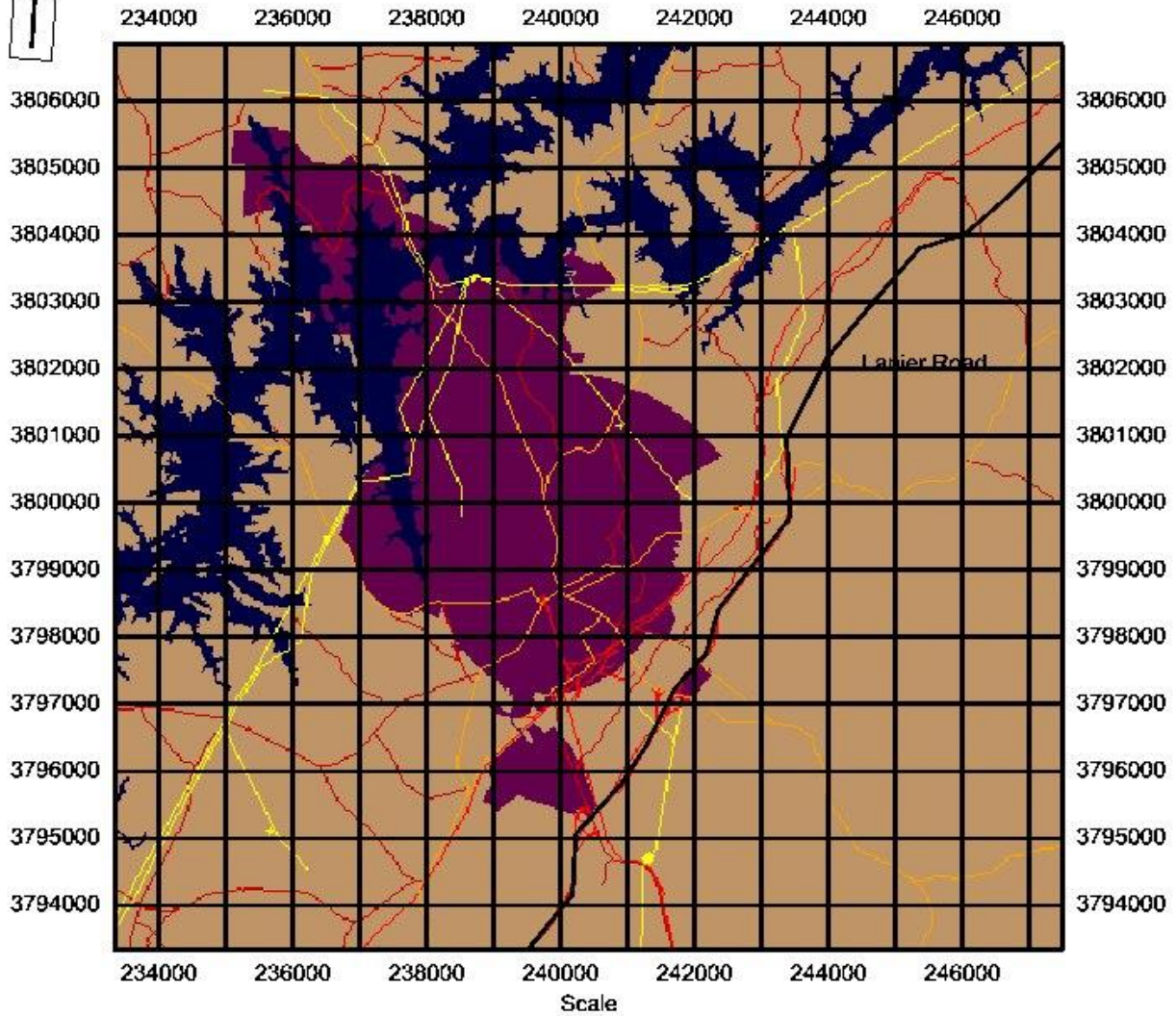
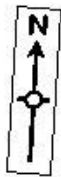
-  49 degrees
-  99 degrees
-  149 degrees
-  199 degrees
-  249 degrees
-  299 degrees



Arab Academy for  
Science, Technology and Maritime Transport



# Power Transmission Line & Road Using ERDAS IMAGINE



Scale 1 : 94402.51

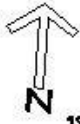
## Legend

Class_Names	Custom
BG	
Power Transmission Lines	
Substations	
Dual Highways	
Primary Highways, Hard Surface	
Secondary Highways, Hard or Imp	
Railroads	
City of Gainesville	
Lake Lanier	

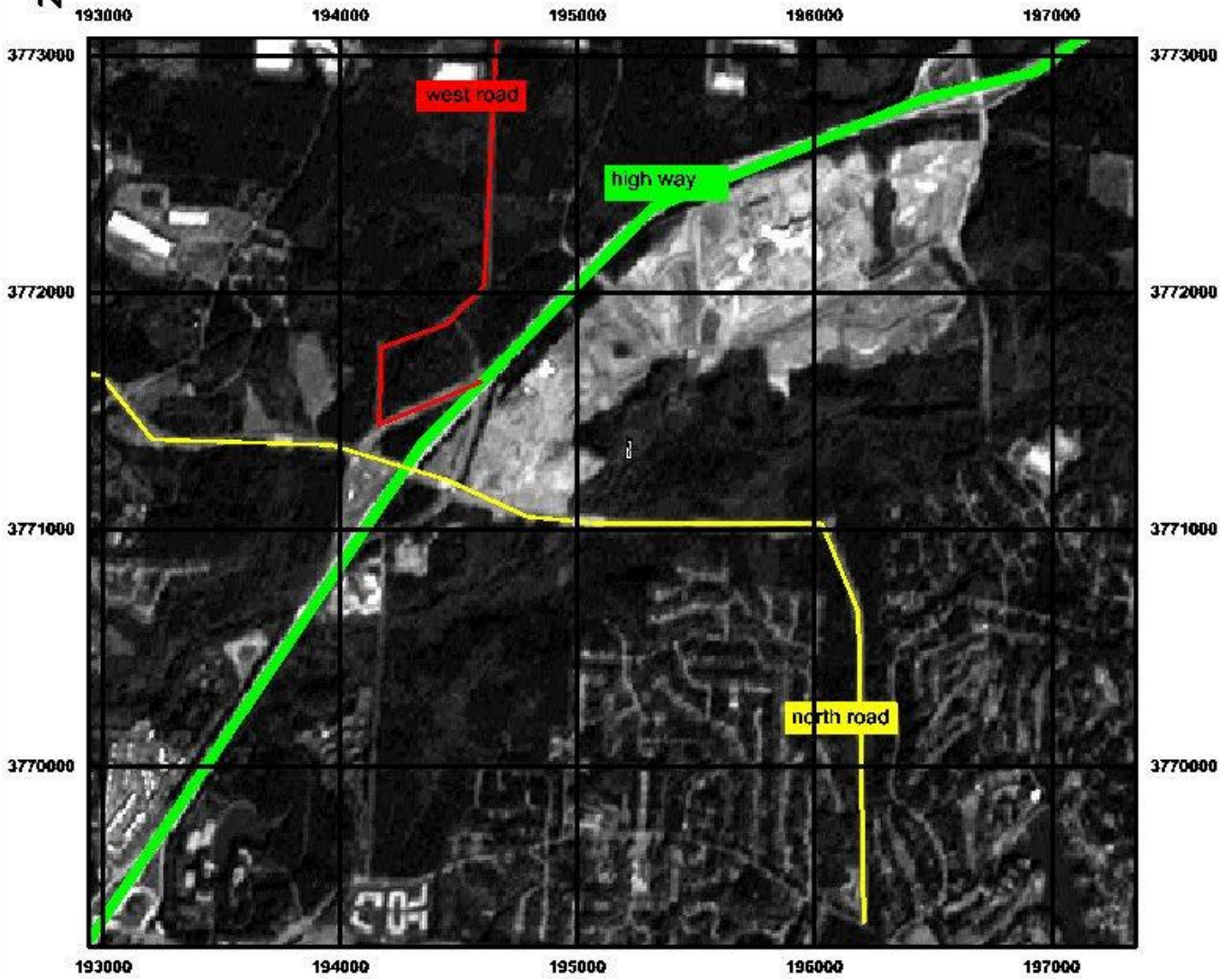


Arab Academy for  
Science, Technology and Maritime Transport

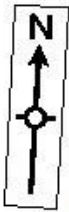




# Roads Map Using ERDAS IMAGINE



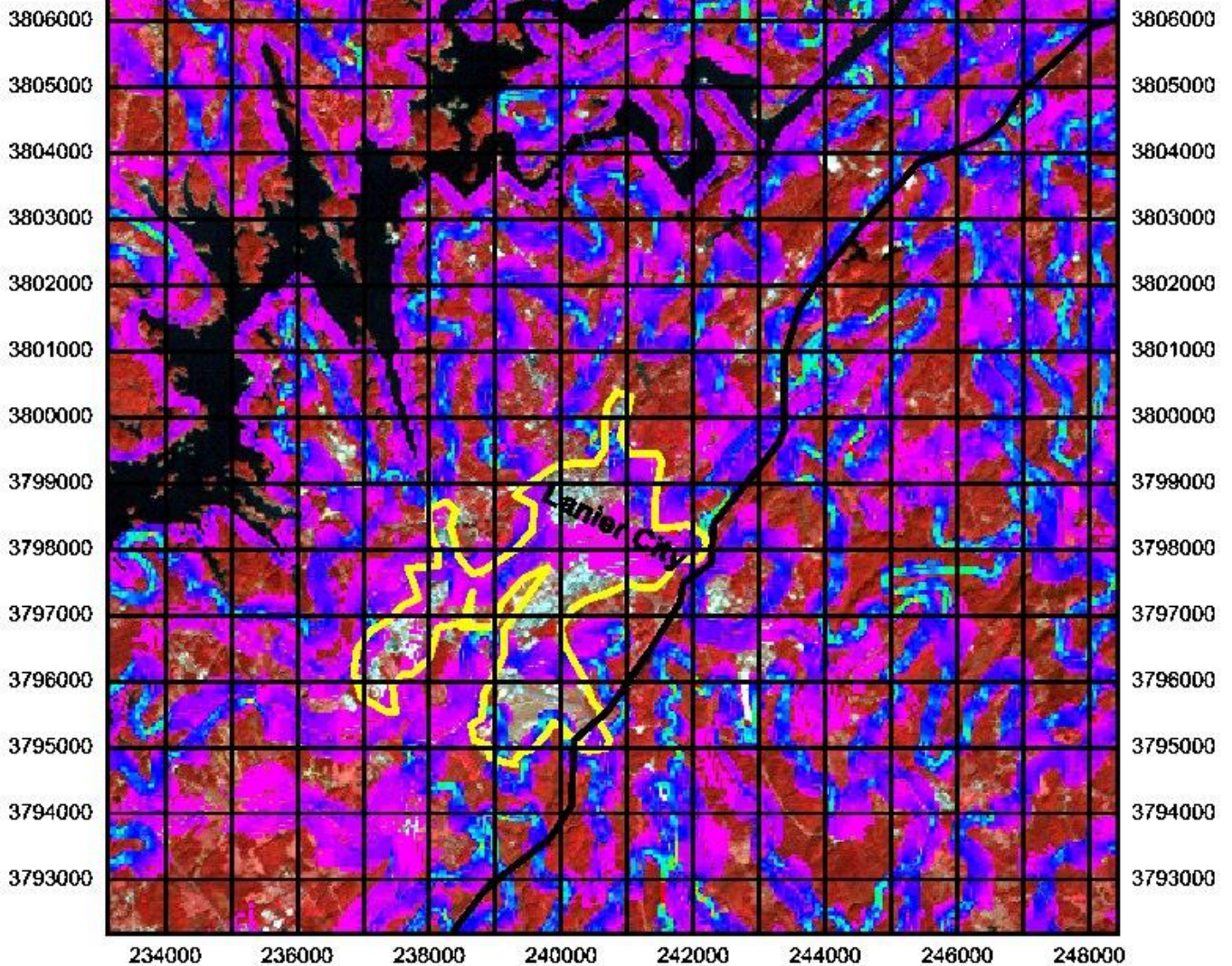
**Arab Academy for  
Science, Technology and Maritime Transport**



# Slope Analysis Map

## Using ERDAS IMAGINE

234000 236000 238000 240000 242000 244000 246000 248000



### Legend

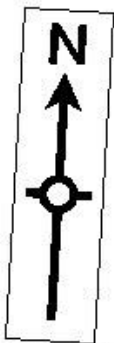
#### Class\_Names

-  1 degrees
-  3 degrees
-  5 degrees
-  7 degrees
-  9 degrees
-  11 degrees
-  13 degrees
-  15 degrees
-  17 degrees
-  19 degrees
-  21 degrees
-  23 degrees
-  25 degrees

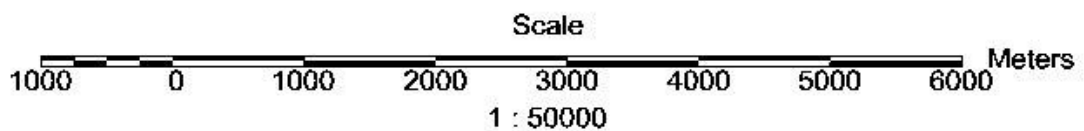
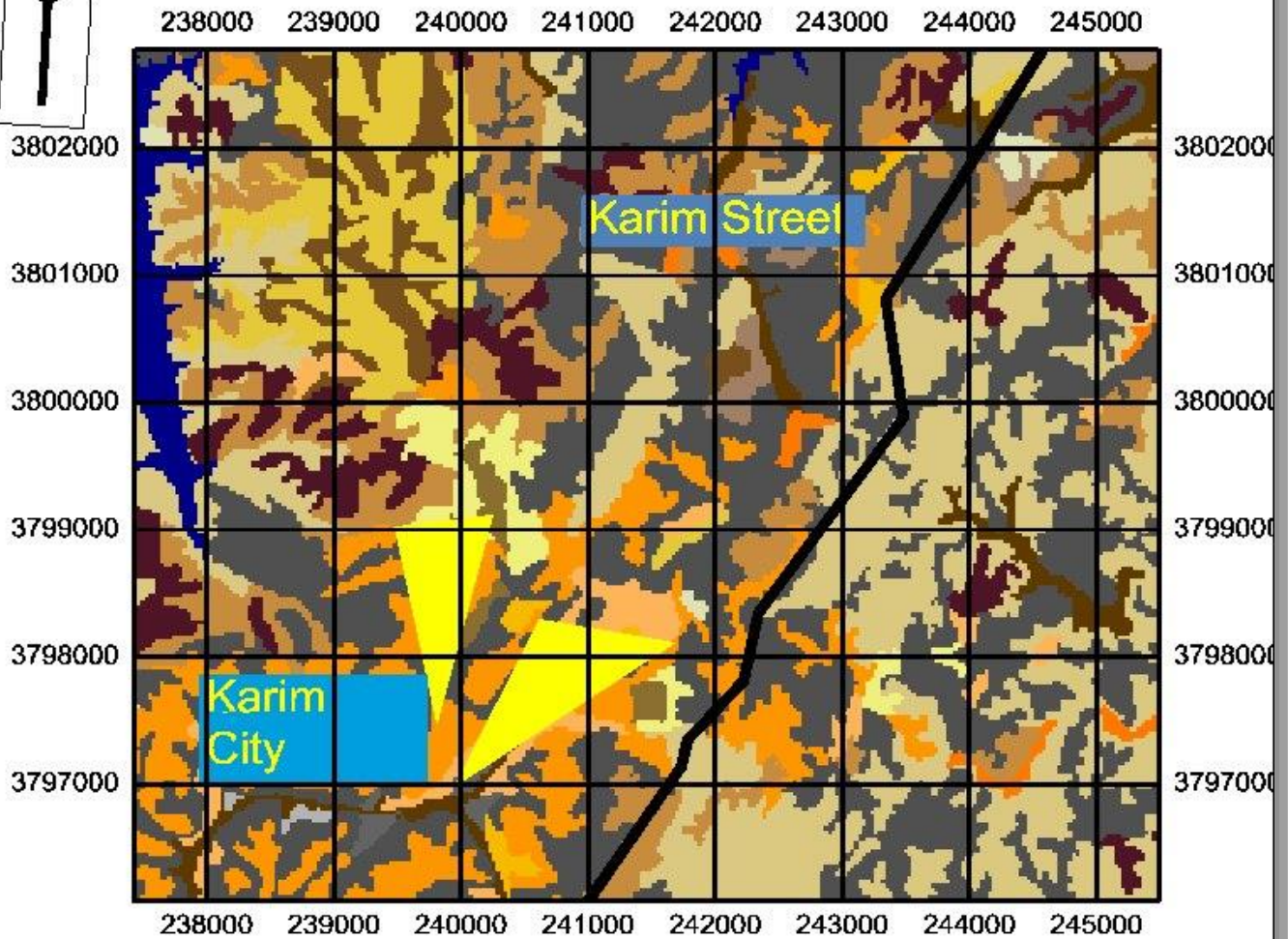


**Arab Academy for  
Science, Technology and Maritime Transport**





# Soil Analysis Map Using ERDAS IMAGINE



**Legend**

---

Class\_Names

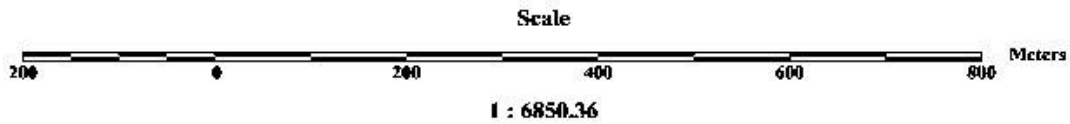
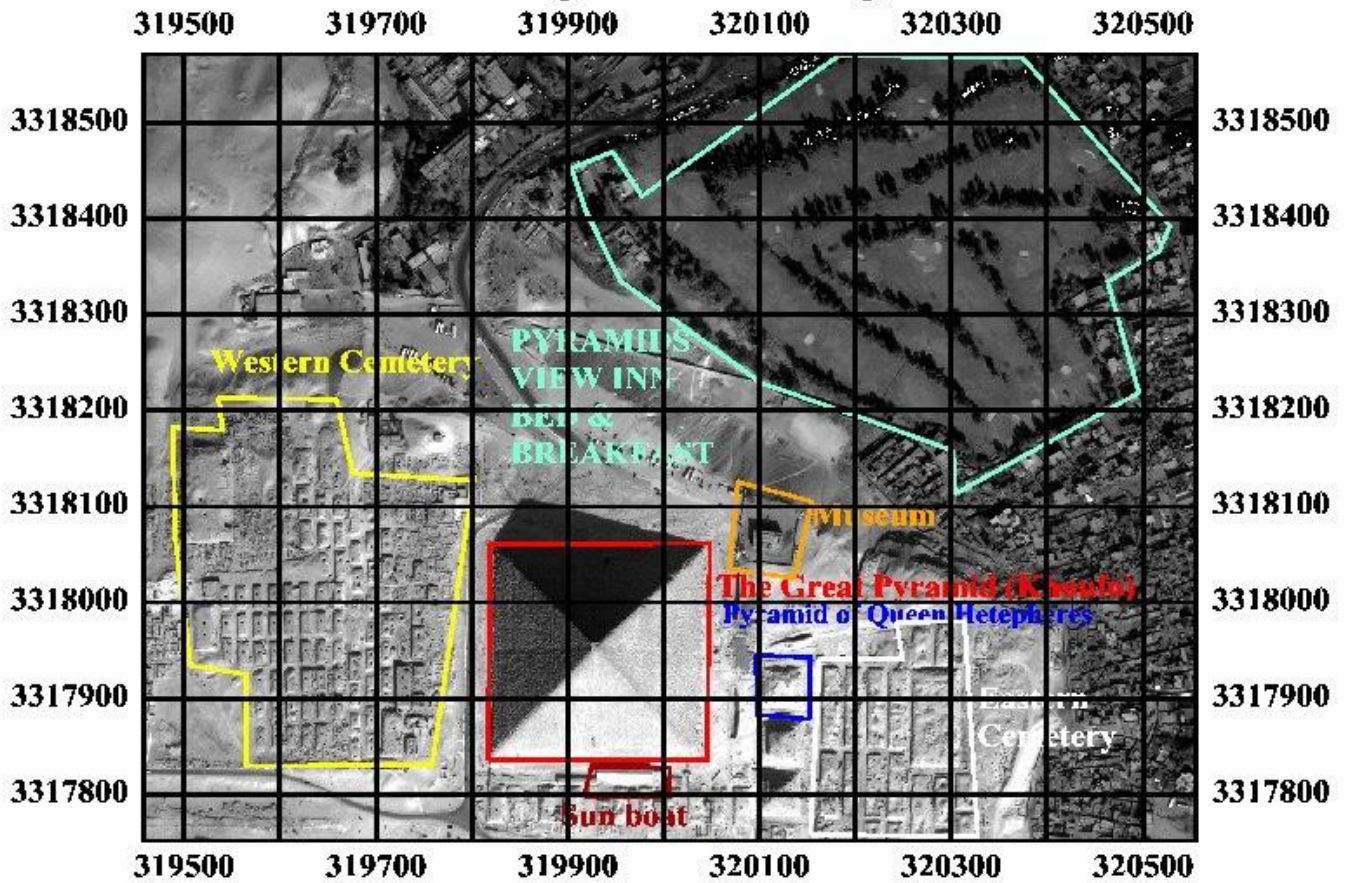
BG	
■	ALTAVISTA SANDY LOAM, 2-6%
■	APPLING SANDY LOAM, 2-6%
■	APPLING SANDY LOAM, 6-10%
■	APPLING SANDY LOAM, 10-15%
■	AUGUSTA LOAM
■	CARTECAY & CHEWACLA SOILS
■	CECIL SANDY LOAM, 2-8%
■	CECIL SANDY LOAM, 8-10%
■	CECIL SANDY CLAY LOAM, 6-10%



**Arab Academy for  
Science, Technology and Maritime Transport**



# Touristic Map Using Erdas Imagine



**Arab Academy for  
Science, Technology and Maritime Transport**





# Some Selected Students' Photos





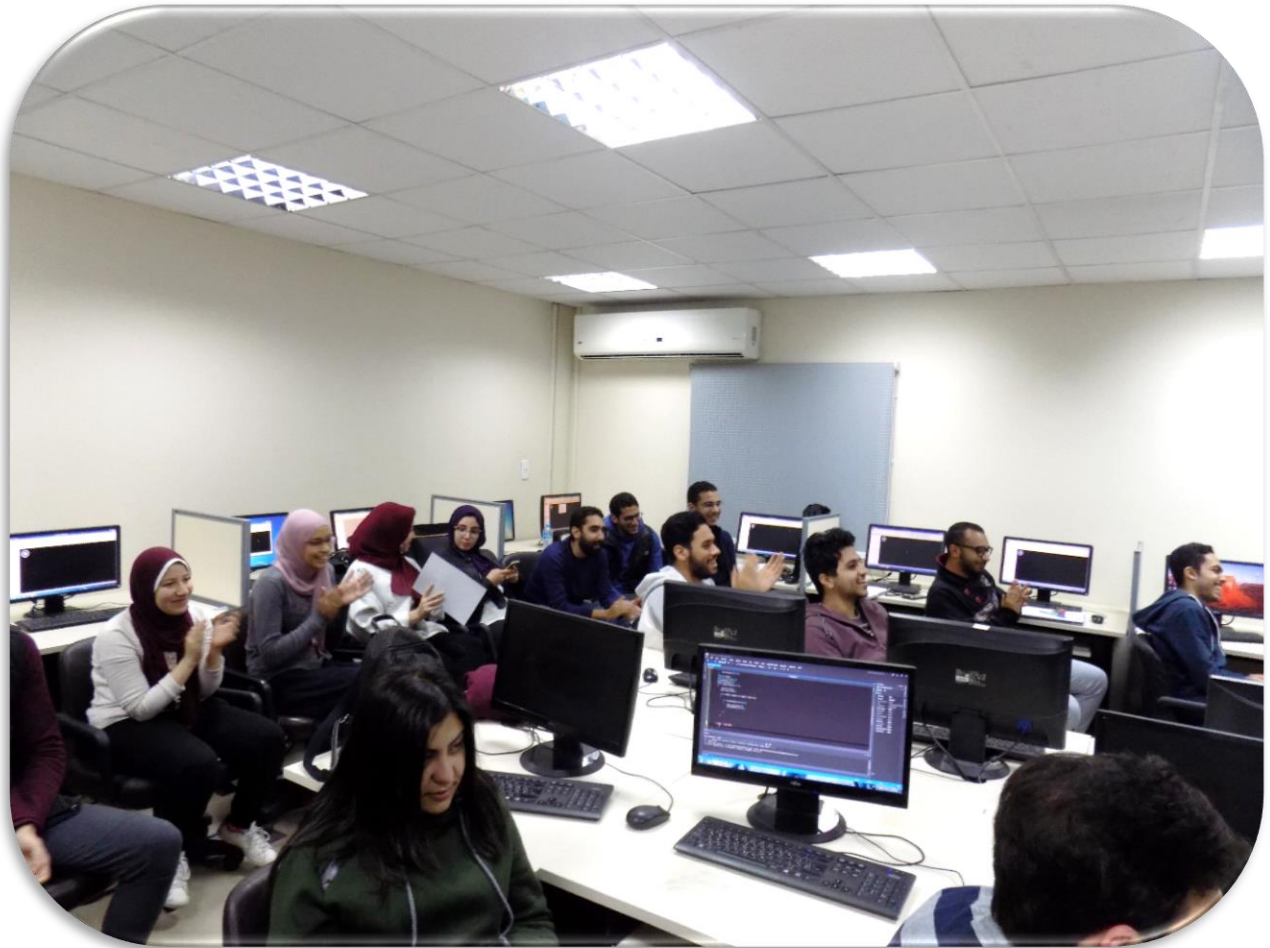








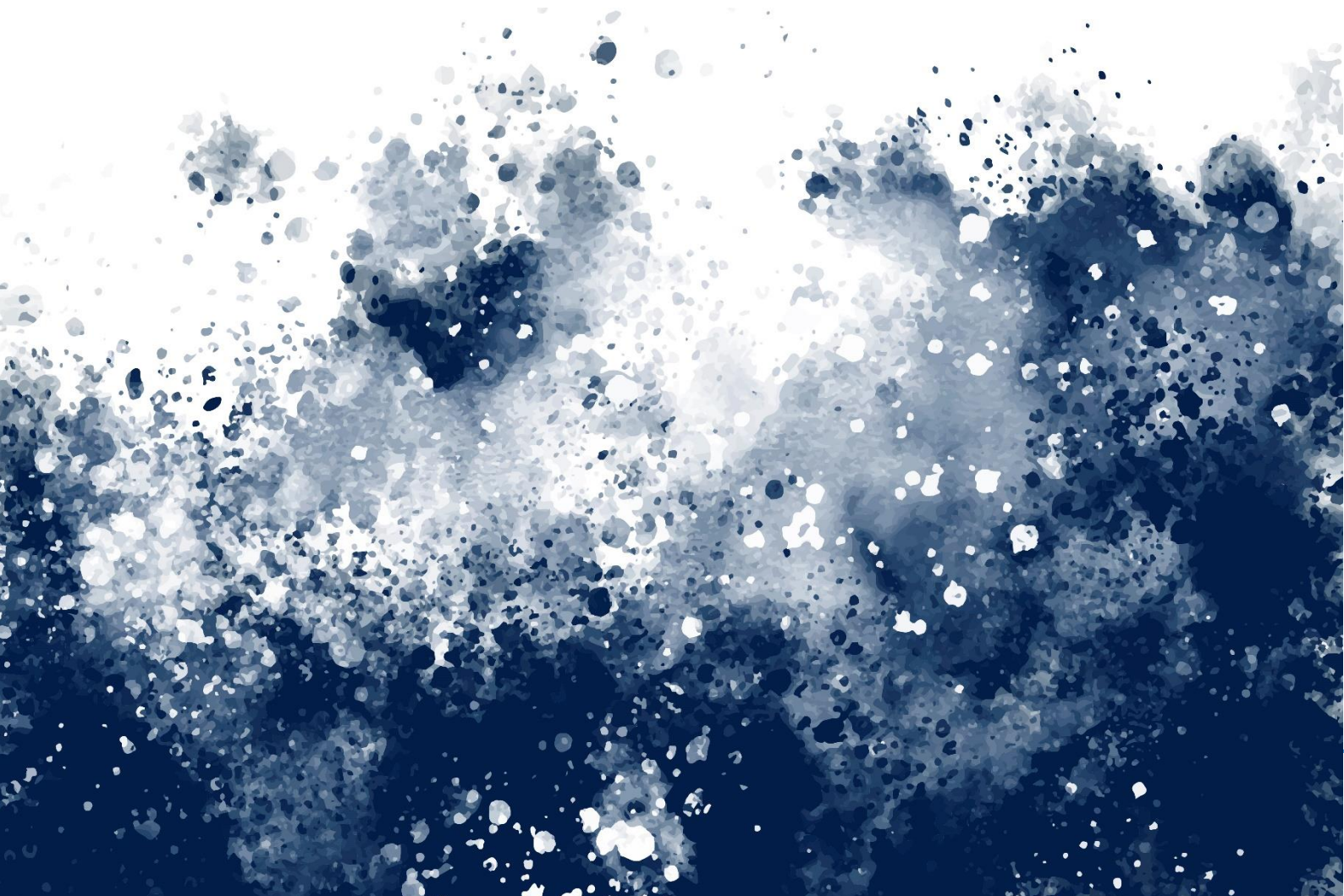








# **Samples from Students' Certificates**



*Certificate*

 **BRS-Labs**  
Brilliant Remote Sensing Labs FZ LLC

**Remote Sensing Portal**



This is to certify that  
*Yasmien Elsayed Hussien*  
has successfully completed  
**Remote Sensing Fundamentals**

Course and Exam  
**On November 2018**  
**With a grade Distinction**

Signature:  
Course Designers




**Note:** Scan The QR code to verify this certificate from The Remote Sensing Portal

Signature:  
Director & Authorised Instructor  
Brilliant Remote Sensing Labs




**A member of the International Society of  
Photogrammetry & Remote Sensing ISPRS**

  
HEXAGON  
GEOSPATIAL  
Training Partner

*Certificate*

 **BRS-Labs**  
Brilliant Remote Sensing Labs FZ LLC

**Remote Sensing Portal**



This is to certify that  
*Ahmed Nabil Amer*  
has successfully completed  
**Remote Sensing Fundamentals**

Course and Exam  
**On November 2018**  
**With a grade Distinction**

Signature:  
Course Designers




**Note:** Scan The QR code to verify this certificate from The Remote Sensing Portal

Signature:  
Director & Authorised Instructor  
Brilliant Remote Sensing Labs




**A member of the International Society of  
Photogrammetry & Remote Sensing ISPRS**

  
HEXAGON  
GEOSPATIAL  
Training Partner

*Certificate*




**Remote Sensing Portal**

This is to certify that  
*Hassan Fakhrouk*  
has successfully completed  
**Remote Sensing Fundamentals**

Course and Exam  
**On November 2018**  
With a grade **Distinction**

Signature:  
Course Designers




Signature:  
Director & Authorised Instructor  
Brilliant Remote Sensing Labs






**A member of the International Society of  
Photogrammetry & Remote Sensing ISPRS**

**Note:** Scan The QR code to verify this certificate from The Remote Sensing Portal

*Certificate*




**Remote Sensing Portal**

This is to certify that  
*Mohamed Wafaie Ehab*  
has successfully completed  
**Remote Sensing Fundamentals**

Course and Exam  
**On November 2018**

Signature:  
Course Designers




Signature:  
Director & Authorised Instructor  
Brilliant Remote Sensing Labs






**A member of the International Society of  
Photogrammetry & Remote Sensing ISPRS**

**Note:** Scan The QR code to verify this certificate from The Remote Sensing Portal

# **The Students' Reviews & Feedback**



# Raise your hand if you wish to continue studying Remote Sensing with us for a second academic term





[info@remote-sensing-portal.com](mailto:info@remote-sensing-portal.com)



[www.remote-sensing-portal.com](http://www.remote-sensing-portal.com)

© Brilliant Remote Sensing Labs. Creative City, Creative Tower, Fujairah, UAE.